



# AGA™ THE AGA MESSENGER

CENTRAL  
KENTUCKY  
CHAPTER

VOLUME XXVII, ISSUE 1

JUNE 2006

## UPCOMING CHAPTER EVENTS

June 1, 2006  
**Membership  
Meeting**

Presenter  
**William P. Hanes**  
*Executive Director,  
KY Retirement  
Systems*

Location:  
Office Pub & Deli

Time:  
11:30 am—12:30 pm

Price:  
\$5 lunch

## President's Message

Mary Hudson

I would like to say thank you to all who participated in the training on May 4, 2006. It was a wonderful success! We gained several new members, gave \$1,000 in community service awards, provided some AGA member awards, honored the out-going CEC, and recognized the in-coming CEC. All the while, providing an excellent training session for our members!

By becoming a member of AGA, you have made an investment---an investment in the improvement of government accountability and your professional career in government. Most importantly, you have made an investment in yourself!

If you are not yet an AGA member and would like to become one or would like to receive more information, please contact Lee Ann Watters, Membership Director.

The Central Kentucky Chapter of AGA works very hard to meet the needs of its members by providing training sessions on pertinent topics for government financial management professionals. But, we need YOUR help! Your involvement in chapter events and your feedback is essential to help us to provide quality training and other events for our members.

Here are some ways to get involved and get excited about your investment in AGA:

### CGFM Program:

AGA offers an education and certification program for government professionals, the Certified Government Financial Manager (CGFM) Program. This certification provides the knowledge and guidance a government professional needs to meet the challenges of advancing government accountability.

We would like to begin coordinating study groups for the CGFM exams. If you are interested in participating in the study groups, or would like to get more information about the CGFM certification, please contact Rick Waddle, CGFM Program Director.

(Continued on page 7)



**Featured Speaker:**  
**Mr. William Hanes,**  
*Executive Director  
KY Retirement Sys-  
tems*

Mr. Hanes has been the Executive Director of Kentucky Retirement Systems for the past five years, a \$14.5 billion public pension fund serving over 294,000 active and retired members representing state and local government employees and State Policemen. He is responsible for the overall management of 245 full-time staff and the numerous operations of the Systems, and represents the retirement systems on public policy matters, including issues before the Kentucky General Assembly. Mr. Hanes has previously served as Deputy Commissioner of Benefit Services with duties that included work as legislative liaison and Board legal counsel over the course of his 20-year tenure with KRS.

Mr. Hanes' government experience spans 30 years, beginning with the Office of Judicial Planning, and later the Kentucky Legislative Research Commission where he worked for House and Senate leadership. He next served as legislative liaison to the Secretary for the Department of Natural Resources. Mr. Hanes briefly left public service to build a successful business selling securities and life insurance while attending law school at night. Upon graduation, he returned to government service with the County Attorney's office in

(Continued on page 7)

## IN THE MESSENGER

Chapter Meeting  
News & Notes

Chapter Events &  
Happenings

National and Re-  
gional News

Treasurer's Reports

List of Officers and  
Directors

# Central Kentucky Chapter Meeting News & Notes

## Chapter Scholarship Awarded

**W**e are pleased to announce that Sarah Blackwell has been awarded the Central Kentucky Chapter's \$1,000 scholarship for accounting students. Sarah is the daughter of Kenny and Angie Blackwell. Sarah is a junior at Georgetown College where she is majoring in Accounting and minoring in Communications. She has recently accepted an internship with the accounting firm of Mountjoy & Bressler, LLP. Sarah will be studying in London, England in the 2006 fall semester. After graduating from Georgetown, she plans to attend the University of Kentucky to earn a masters degree in Accounting. Sarah plans to pursue a career in government.

## Chapter Holds Successful May Training in Conjunction with Banquet

*By Cindy Upton*

On May 4, 2006, the chapter held its annual awards banquet in conjunction with an all-day continuing professional education event. The training program was "Fraud: How to Prevent It, But Also How to Detect It," presented by Dennis F. Dycus, CFE, CPA, CGFM. Mr. Dycus is the Director of the Division of Municipal Audit for the Office of the Comptroller of the Treasury, State of Tennessee.

The training covered five topics: introduction to fraud prevention, evaluation of internal controls, internal fraud schemes, external fraud schemes, and recognizing red flags. Participants gave high ratings to the training. On a scale of 1 to 5, with 5 being the highest possible rating, Mr. Dycus received the following scores:

- Learning objectives were clearly stated = 4.7
- Course content is relevant to my professional responsibilities = 4.5
- Instructor's presentations were well-organized = 4.9
- Appropriate time was allotted for the topic/sessions = 4.5

The chapter education committee would like to thank everyone who participated and provided suggestions for future training sessions.

## New Chapter Leaders installed at May Banquet

The May Banquet signals the official beginning of a transition of power within the Central Kentucky chapter. New officers are appointed and former officers begin training and guiding them to benefit the chapter during the current year. The 2006-2007 program year officers are:

<b>President</b>	Mary Hudson KY Auditor of Public Accounts
<b>Past President</b>	Rick Waddle KY Department of Fish & Wildlife
<b>President-Elect</b>	Vacant. Please contact Mary Hudson if interested in filling this position.
<b>Secretary</b>	Nancy Beth Cary Mountjoy & Bressler, LLP
<b>Treasurer</b>	Amy Small KY Auditor of Public Accounts
<b>Membership Director</b>	Lee Ann Watters Mountjoy & Bressler, LLP
<b>CGFM Director</b>	Rick Waddle KY Department of Fish & Wildlife
<b>Communications Director</b>	Vacant. Please contact Mary Hudson if interested in filling this position.
<b>Programs Director</b>	John Williams KY Environmental and Public Protection Cab.
<b>Education Director</b>	Cindy Upton KY Legislative Research Commission
<b>Attendance Director</b>	Leslie Aitken KY Cabinet for Health and Family Services
<b>Community Service Director</b>	Linda Sagraves KY Auditor of Public Accounts
<b>Early Careers Director</b>	Sharon Parrish Kentucky State University
<b>Historian</b>	Catherine Hunt KY Auditor of Public Accounts

# Central Kentucky Chapter Events and Happenings

## Chapter Awards Presented at May Banquet

**Chapter Member of the Year**—Leslie Aitken, *for her dedication to AGA and her willingness to help*

**CEC Member of the Year**—Phil Nally, *for working tirelessly for the chapter in many different roles, often outside his area of responsibility*

**CGFM of the Year**—Lydia Reynolds, *for being the first chapter member to sit for and pass the exam certification and her efforts in promoting the CGFM certification*

**Excellence in Community Service**—Cindy Upton, *for collecting an astounding amount of pop tabs for the Friends of Indian Summer*

**Perfect Attendance Recognition**—Scott Vogt and Leslie Aitken

**Recruiter of the Year Award**—Phil Nally

**New CGFM Recognitions**—Lee Ann Watters and Lydia Reynolds

### Anniversary Awards

- 5-year membership
  - Rick Waddle, Jr., CPA
  - Mary R. Hudson
  - Vanessa Howard
  - Amy C. Small
  - Bob Bass, CPA
- 10-year membership
  - Michelle Veach
  - Randall C. Dowell
  - Michael R. Walters, CGFM
  - Ken R. Dougherty, CGFM
- 15-year membership
  - Mr. Daniel W. Flaherty
- 25-year membership
  - Mr. Don R. Fields, CGFM

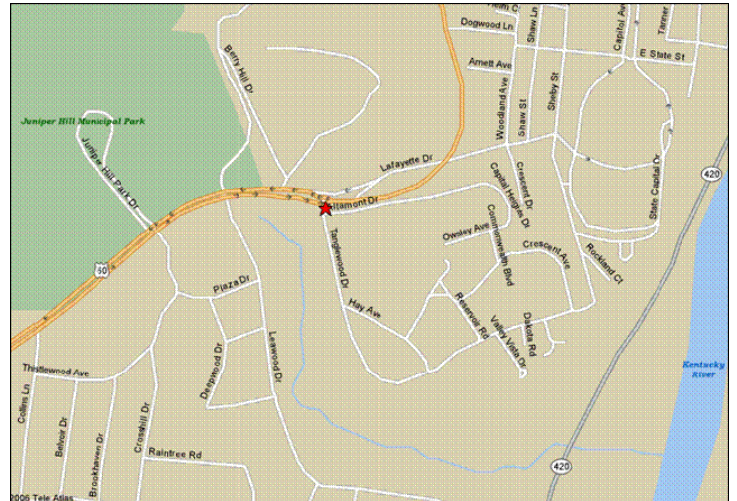
## *Congratulations!*

## We're Moving!



In order to offer our members a better quality of educational experience, the Central Kentucky Chapter will begin hosting monthly membership meetings at the Frankfort Plant Board Clubhouse. The Clubhouse, located on the west

side of Frankfort 50 Tanglewood Drive, offers the capability for multi-media presentations and an increased number of



attendees.

Lunch will continue to be served at monthly membership meetings. Caterers are in the process of being chosen and members will benefit from a selection of entrees and side dishes. Members will be asked to make reservations for membership meetings so that caterers can plan ahead. Standing reservations will be accepted.

This change will go into effect at the July 12 meeting. We have enjoyed our time at the Office Pub and Deli but have begun to outgrow the space there.

We look forward to seeing you at the FPB Clubhouse in July!

# Central Kentucky Chapter Events and Happenings

Date	Speaker	Topic	CPE?	Credits
June 1, 2006 (Office Pub & Deli)	Bill Haines, Executive Director KY Retirement Systems	Retirement	Yes	1 hr.
July 12, 2006 (FPB Clubhouse)	Jill LeMaster Executive Director Commonwealth of KY Executive Branch Ethics Commission	Ethics	Yes	1 hr.
August 3, 2006 (FPB Clubhouse)	Barbara Henderson KY Personnel Cabinet Employee Assistance Branch	Anxiety Management	Yes	1 hr.
September 7, 2006 (FPB Clubhouse)	Alex Whitenack KY Office of the Controller Customer Resource Center	eMARS	Yes	1 hr.
October 5, 2006 (FPB Clubhouse)	Daniel Hinton Public Service Commission Division of Financial Analysis	Public Service Commission	Yes	1 hr.
October 2006 (Date and Location TBA)	17th Annual Governmental Accounting and Au- diting Update	TBA	Yes	16 hrs.
November 1, 2006 (FPB Clubhouse)	Christine Wilcoxson Commissioner KY Dept. for Employee Insurance	Self-Insurance Fund	Yes	1 hr.
December 7, 2006 (FPB Clubhouse)	TBA	Time Management	Yes	1 hr.
January 11, 2007 (FPB Clubhouse)	TBA	Tax Update	Yes	1 hr.
February 2, 2007 (FPB Clubhouse)	TBA	KY Community and Technical College System	Yes	1 hr.
March 1, 2007 (FPB Clubhouse)	Penny Gold Executive Director KY Society of CPAs	KSCPA Update	Yes	1 hr.
April 5-6, 2007 (Marriott Griffin Gate Resort, Lexington)	Southeastern Regional Professional Develop- ment Conference	Governmental Financial Manage- ment	Yes	16 hrs.
May 3, 2007 (TBA)	Janet Kelly Carr, Ph.D.	Performance Auditing	Yes	4 hrs.
Total CPE hours				46 hrs.

# National and Southeast Regional News



## Regional Chapter Officers' Workshop Held In Louisville

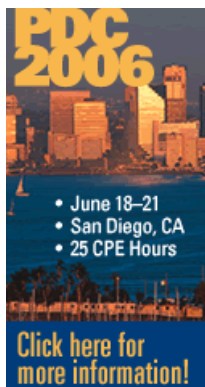
The Southeastern Region's Chapter Officers' Workshop (RCOW) was held May 12, 2006 at the Louisville Marriott Downtown. The event kicked off on Thursday night with dinner at the Bristol Bar & Grille. New friendships were made and chapter members from all over the region networked.

The RCOW, hosted by Southeastern Region Regional Vice President Phil Nally on Friday, taught chapter officers from around the region about the makeup and workings of AGA and what makes it special. The event also served as an introduction to chapter leadership and as an excellent networking tool for all chapters. Ideas flowed freely and chapter officers shared their best practices and sought solutions to their chapters' concerns.

Among those in attendance at the RCOW were Evie Barry, National Director of Education, Deby Davis, SE Region Education Coordinator and Senior VP for Regional Services—Section IV (Chattanooga Chapter), and Joe Kapelewski, immediate past Senior VP for Regional Services—Section IV (Richmond Chapter). Additionally, Janet Brooks of Charleston, South Carolina was in attendance to learn what it takes to form and run a chapter. Ms. Brooks is working with the National Office to add an AGA chapter in Charleston.

Regional goals for the 2005-2006 program year include:

1. Accountability—promoting the value and importance of
2. Certification—promoting the CGFM program
3. Education—promoting national, regional and chapter events
4. Membership Services—
  - promoting the revitalization of existing chapter and the formation of new chapters;
  - promoting the use of regional coordinators;
  - promoting communication between chapters, coordinators and the national office;
  - advancing membership, growth and retention;
  - encouraging relationships with other professional organizations;
  - identifying candidates for national, regional and chapter awards; and
  - Encouraging local governments to participate in the Service Effort and Accomplishments program
5. Provide feedback to the National Executive Committee
6. Strategic planning at the local chapter level



## National Community Service Raffle to Be Held at PDC

Once again, funds will be raised to increase the National Community Service Fund and to donate to winning organizations at the Professional Development Conference in San Diego. The National Office requests that each chapter provide a gift basket, representative of its state or region, for placement in a raffle to be held at the annual PDC. Attendees can purchase raffle tickets and vote for their charitable organization of choice. Ticket buying can get fierce with some great baskets up for grabs!

The Central Kentucky Chapter has commissioned Julie Deringer of Julie's in Frankfort to create a "Best of the Bluegrass" basket. It's sure to be a hot selling basket! Included in the basket are the following:

- "Splendor in the Bluegrass" Junior League of Louisville cookbook
- Maker's Mark Assortment (gourmet sauce, cigars, barbecue sauce, etc.)
- Rebecca Ruth Bourbon Balls
- Ruth Hunt Cream Candy
- Lawrenceburg Candle Co. —Bourbon Ball Candle
- "Southerners Tea Towel"
- Screamin Mimi's Salsa
- Trigg County Country Ham
- Weisenberg Mills Biscuit & Cornbread mixes
- Shaker broom
- Midway Barn Honey Company
- Jim Beam Hot Sauce
- Buffalo Trace Barbeque Sauce
- Kentucky Horse Magazines
- A small framed photo of the Triple Spires in Frankfort by Gene Burch



# National and Southeast Regional News

## Nashville Chapter Goes the Extra Mile for CGFM

By Christina M. Camara



**A**GA's Nashville Chapter has pulled off its own version of a hat trick: gaining high-level recognition of the CGFM credential three times this year.

March was proclaimed CGFM Month by the governor, Tennessee General Assembly and Metropolitan Nashville and Davidson County government.

The proclamation signed by Governor Phil Bredesen says in part that chapter members "are making significant advances both in professional ability and in service to the citizens of Tennessee by mastering increasingly technical and complex requirements." Nashville Chapter CGFM Coordinator Ronald H. Queen, CGFM, CPA, worked with contacts in the governor's office, and this was the second year the chapter was able to persuade the governor to acknowledge the CGFM through the proclamation.

The chapter did not stop at the governor's office, though. The next stop was the Tennessee General Assembly. Luckily, Nashville's AGA newsletter committee editor, Nichole Curtiss, could ask her father for a little help. State Rep. Charles Curtiss sponsored and helped pass a joint House-Senate resolution, also proclaiming March to be CGFM Month. The difference this time, though, was that no year was specified, so the same resolution will go forward every March.

Gerry C. Boaz, CGFM, CPA, AGA's CGFM Coordinator of the Southeast Region and the President-Elect of the Nashville Chapter, said the idea to go a step further was raised during a regional coordinator conference call. Once again, AGA's network helped. Queen contacted his former co-worker, Metro Council member Ginger Hausser, who sponsored the proclamation.

Representatives from the governor's office, General Assembly and the Metro Council were then invited to attend a chapter meeting, giving them even more exposure to AGA. Boaz said a press release was issued to the news media throughout the state, explaining the proclamations, the CGFM designation and a little background on AGA itself.

Nashville's work was part of a national effort to pursue state and local government proclamations declaring March CGFM Month as a way to recognize the program and the accomplishments of the CGFMs who display the professionalism exemplified by the designation. Thirteen states and six local governments have issued official proclamations and four more states have issued recognition or congratulatory letters or proclamations ([http://www.agacgfm.org/cgfm/proclamations\\_06.aspx](http://www.agacgfm.org/cgfm/proclamations_06.aspx))

Boaz said that marketing the CGFM outside of AGA is part of a new, long-range strategy for the chapter. More than half of the Nashville Chapter members have already earned the CGFM designation, and efforts to encourage more members to take the three exams haven't produced many new CGFMs over the last couple of years.

"We decided it was time to change directions and think outside the box to figure out what we need to do to get more people outside of AGA involved and let them know exactly what AGA is about and what the CGFM is about," Boaz said. In addition to educating legislators and government employees, the chapter is also reaching out to the private CPA firms that may be interested in contracting with government to do audit work. The chapter is planning to send out information to every CPA firm in the state that describes AGA, the CGFM Program and the competitive advantage of the certification with a government focus.

Work is continuing within state government as well. While the state Department of Personnel allows various departments to offer salary increases to employees who pass the CGFM Examinations, not every department chooses to do so, Boaz said. Queen is making short educational presentations about the CGFM to personnel directors from various state agencies.

And in an even more ambitious effort, the chapter's CGFM Coordinator and Past National President Charles Harrison, CGFM, CPA, are trying to gain support for changing the job descriptions for certain finance positions in state government so that the CGFM is given preference in hiring. Boaz says the chapter sees this work as a multi-year effort.

The chapter is always looking for new members and new CGFMs, but it's also educating upper-level government officials as to the benefits of the designation, Boaz said. "This approach is trying to work from the top down and from the bottom up at the same time."

Find more information about the Nashville Chapter's CGFM promotions at <http://www.nashvilleaga.org/CGFM.htm>





## Take the CGFM Examinations at the PDC

For the second year in a row AGA is offering a great opportunity to take the CGFM Examinations and earn your CGFM at the annual Professional Development Conference & Exposition (PDC) in San Diego.

Whether you've been thinking about earning your CGFM or have enrolled but found it difficult to find time to complete the three exams, this is your chance to get it done!

To help you reach that goal, we are offering a two-day Intensive Review Course on Thursday, June 15 and Friday, June 16 and an opportunity to take CGFM Examinations on June 17-19, 2006. The cost of the course is only \$225 for qualified participants, and it offers 18 CPE hours. Special Bonus: the CGFM Examinations taken during this event are free of charge!

This course is designed as a supplement to previous preparation for the CGFM Examinations, so this event is perfect for those individuals who have already attended CGFM training courses or have been studying by using the CGFM study guides. Space is still available, but enrollment is limited and participants must first apply and be accepted into the CGFM Program, so don't delay.

More information and a registration form for this event are available on AGA website - [http://www.agacgfm.org/pdc2006/cgfm\\_exam.htm](http://www.agacgfm.org/pdc2006/cgfm_exam.htm). If you have any questions, contact Katya Silver at 703-684-6931 ext. 305 or [ksilver@agacgfm.org](mailto:ksilver@agacgfm.org).



### *President's Message* (Continued from page 1)

#### **Monthly Meetings:**

Every month, we provide a lunch and training for our members and guests. We offer a different topic each month to appeal to various interests and needs. Our next meeting is June 1 at the Office Pub & Deli at 11:30 am. Mr. Bill Haines, Executive Director of the Kentucky Retirement Systems will be our speaker. Please join us.

#### **Committees:**

If you have some ideas for AGA, here is your chance to be heard! We have several committees in which we need member involvement. Our committees are: programs, education, membership services, CGFM, member awards, early careers, community service, and PDC 2007. If you would like to get involved in a committee, please contact any of the chapter officers!

#### **Community Service:**

We plan various community service events throughout the year. Stay tuned for further information from our Community Service Director, Linda Sagraves. If you have ideas for an event, please contact her.

The Central Kentucky Chapter Executive Committee (CEC) looks forward to serving you this year!

### *Featured Speaker: Mr. William Hanes, Executive Director, KY Retirement Systems* (Continued from page 1)

Franklin County, Kentucky and was an Associate with the firm of Boyd, Watkins and Hart in Frankfort, Kentucky prior to employment with the Kentucky Retirement Systems in 1985.

Mr. Hanes is an Emeritus board member of the National Association of Public Pension Attorneys, where he previously served on the executive board. He is a past President of the National Preretirement Education Association and is a current member of the National Association of State Retirement Administrators, serving as the Second Vice President on the executive committee and chairman for both the Legislative and Resolution committee and the Audit and Budget committee.

Mr. Hanes holds Bachelor of Science degrees in Government and Philosophy from Western Kentucky University, and received his Juris Doctorate Degree from the University of Louisville School of Law. He is a member of the American Bar Association, the Kentucky Bar Association, and the Franklin County Bar Association.



**Treasurer's Report  
For the Months of February & March 2006**

*By Phil Nally*

**OPERATING ACCOUNT**

**EDUCATION ACCOUNT**

<i>Beginning Bank Balance</i>	\$ 6,664.71
<b>Revenue:</b>	
Transfer from education	\$ 0
Local Dues	0
Community Service	45.00
Interest	10.71
<b>Total Revenue</b>	<b>55.71</b>
<b>Expense:</b>	
Jan-Mar Lunch Subsidy	\$ 605.68
SE Region PDC Basket	72.20
Door Prize	15.00
<b>Total Expense</b>	<b>692.88</b>
<i>Ending Bank Balance</i>	\$ 6,027.54

<i>Beginning Bank Balance</i>	\$ 1,000.00
<b>Revenue:</b>	
<b>Total Revenue</b>	
	<b>0.00</b>
<b>Expense:</b>	
<b>Total Expense</b>	
	<b>0.00</b>
<i>Ending Bank Balance</i>	\$ 1,000.00

## Central Kentucky Leadership Directory, 2006-2007

***President, Mary Hudson***  
Auditor of Public Accounts  
502.573.0050  
Mary.Hudson@auditor.ky.gov

***President-Elect***

***Past-President, Rick Waddle***  
KY Dept. of Fish & Wildlife  
502.564.7109  
Rick.Waddle@ky.gov

***Secretary, Nancy Beth Cary***  
Mountjoy & Bressler, LLP  
502.695.1040  
NGillum@mountjoybressler.com

***Treasurer, Amy Small***  
Auditor of Public Accounts  
502.573.0050  
Amy.Small@auditor.ky.gov

***Directors***  
***Programs, John Williams***  
Department for Natural Resources  
502.564.7364  
JohnD.Williams@ky.gov

***Early Careers, Sharon Parrish***  
Kentucky State University  
502.564.6910  
SParrish@gwmail.kysu.edu

***Education & Training, Cindy Upton***  
Legislative Research Commission  
502.564.8100  
Cindy.Upton3@lrc.ky.gov

***Community Service, Linda Sagraves***  
Auditor of Public Accounts  
502.573.0050  
Linda.Sagraves@auditor.ky.gov

***Membership, Lee Ann Watters***  
Mountjoy & Bressler, LLP  
502.695.1040  
LWatters@mountjoybressler.com

***Attendance, Leslie Aitken***  
KY Cabinet for Health & Family Svcs.  
502.564.6663  
Leslie.Aitken@ky.gov

***Historian, Catherine Hunt***  
Auditor of Public Accounts  
502.573.0050  
Catherine.Hunt@auditor.ky.gov

***Communications Director***

***CGFM Director, Rick Waddle***  
KY Dept. of Fish & Wildlife  
502.564.7109  
Rick.Waddle@ky.gov